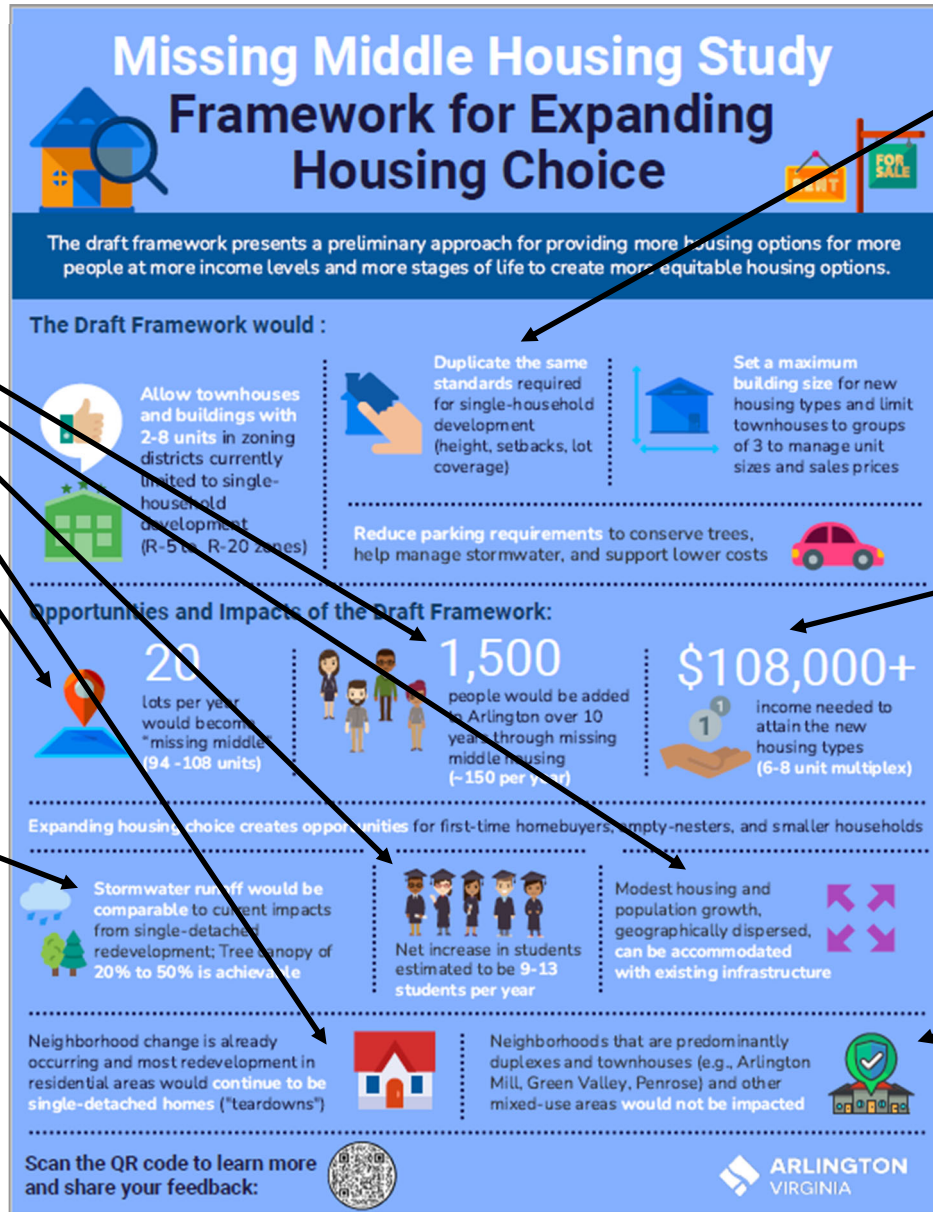


# Critique of County Infographic



These estimates are not grounded in reality—they require modeling and/or pilot project testing.

Due to state rules on tree canopy preservation, eventual tree canopy will be substantially reduced by switch from single-family to multi-family development.

Not true due to opportunities for lot consolidation so far unaddressed by proposed policy!

This required upper middle class level of income will fail to achieve stated diversity goals, and will in fact speed up gentrification!

Not true! Though zoning rules for these areas already allow MM building types, adoption of a county-wide policy will hasten land value inflation, gentrification, and loss of naturally occurring lower income housing.